



SHEAR - LINE

2024

Company

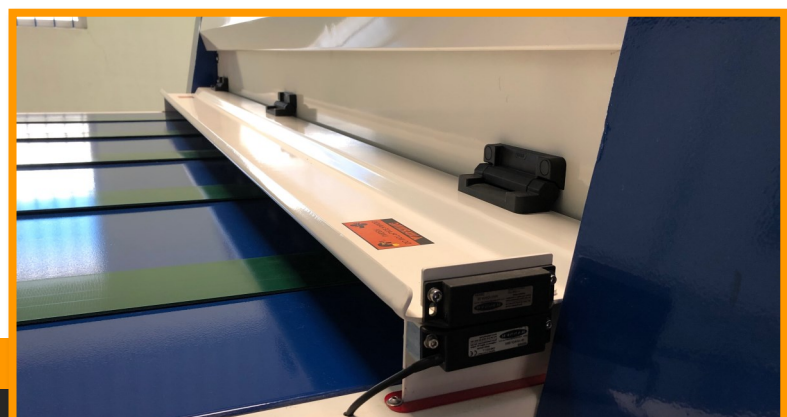
Since 1985 U-Pack has developed unique packaging systems and machines for a variety of industries. Our main development activities have been focused on die-cutting where we have several decades of experience.

Research & Development

U-Pack believe strongly in research and development and has a constant program to improve production capabilities and the profitability of our customers.

Shear-lines around the world

U-Pack die-cutting presses are operating in around 60 countries in industries from plastics to rubber, even Kevlar and cork. Main markets are corrugated board and vacuum formed products.



Content

Applications	Page 3
Models	Page 4
Display	Page 5
General	Page 6
2020 Upgrades	Page 7
Technical	Page 8



The Company

The U-Pack group started as a single company in 1985 manufacturing its own unique design of roller press die-cutters known as Shear-line. Since then 1000s have been sold into 60+ countries Worldwide. Following the Shear-line came many other successful projects.



Development

U-Pack believes strongly in research and development and has a consistent program to improve the production capabilities and profitability of our customers processes. Since 1985 we have developed many unique systems proving to be successful across many industries.



Shear-Line

A roller press, flatbed die-cutter is ideal for new and established companies. designed to process all types of flexible and semi flexible materials from micro flute Corrugated board, double and even triple wall, plastic, leather, foam, foil, rubber, cork to name just a few.



Shear-line Die-Cutting Applications



MATERIALS

- ✓ Corrugated board, single, double and even triple wall
- ✓ Vacuum formed components trimmed up to 12" depth
- ✓ Leather
- ✓ Foam sheets
- ✓ Rubber sheets and belts
- ✓ Medical and food packaging
- ✓ Fiber glass insulation up to 50+mm thick
- ✓ Foil
- ✓ Paper card, puzzles and fabrics
- ✓ Plastic corrugated & blister packs
- ✓ Polythene sheet



Shear-line Specialized Industries



SLVT

Vacuum trimming model with an extended 300mm press section throat.



SLFM

Food and medical stainless steel body. Complying with food and medical regulations.

Shear-line width general

Model cutting width size plus 630mm for cabinets.

Shear-line length

Standard, 3000mm

Additional powered extension table increase table length in 0.5 meter increments.



info@u-pack.com



+44 (0)1989 563684



www.u-pack.com

Displays



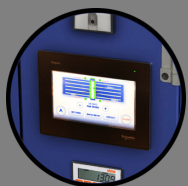
Height Display (Optional)

Height display indicator for press section cutting gap. The press section pressure gap position can be set to cutting blade height with micron precision.



Voltage Meter

Electrical current read out display



HMI Touch Screen

Giving the operator total control over all internal programs; batch count, run speed, safety start, dwell time, run on time, safety indicators and batch timer as well as a number of additional software tools to aid operational efficiency.



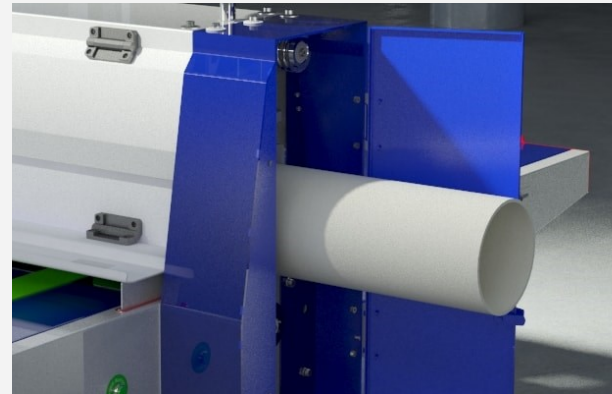
General

Sleeve Change

Shear-line cutting anvil sleeves are unique, made from a special mix of polypropylene materials which enable Shear-lines to die-cut a much larger variety of materials more precisely and cleanly than other similar flatbed die cutters. Shear-line Cutting Anvil Sleeves are very easy to replace when worn, change time in around 20 minutes..

Cutting results are comparable with steel to steel cutting but without the long setup times, knife wear and running costs.

Sleeve replacement changes can be easily carried out by your own maintenance staff by following simple to understand step by step instructions in our sleeve change manual.



Safety

The Shear-line is one of the safest die-cutter machines on the market. All doors and safety guards are installed with safety interlocks that instantly stop the machine when broken.

Systems Integrated safety software and control password with all safety systems.

Control

Each machine is fitted with latest Inverter Drive technology. The latest HMI colour touch screen gives the operator full control and diagnostics over speed and automation, plus a range of other facilities.

Maintenance

Consumables

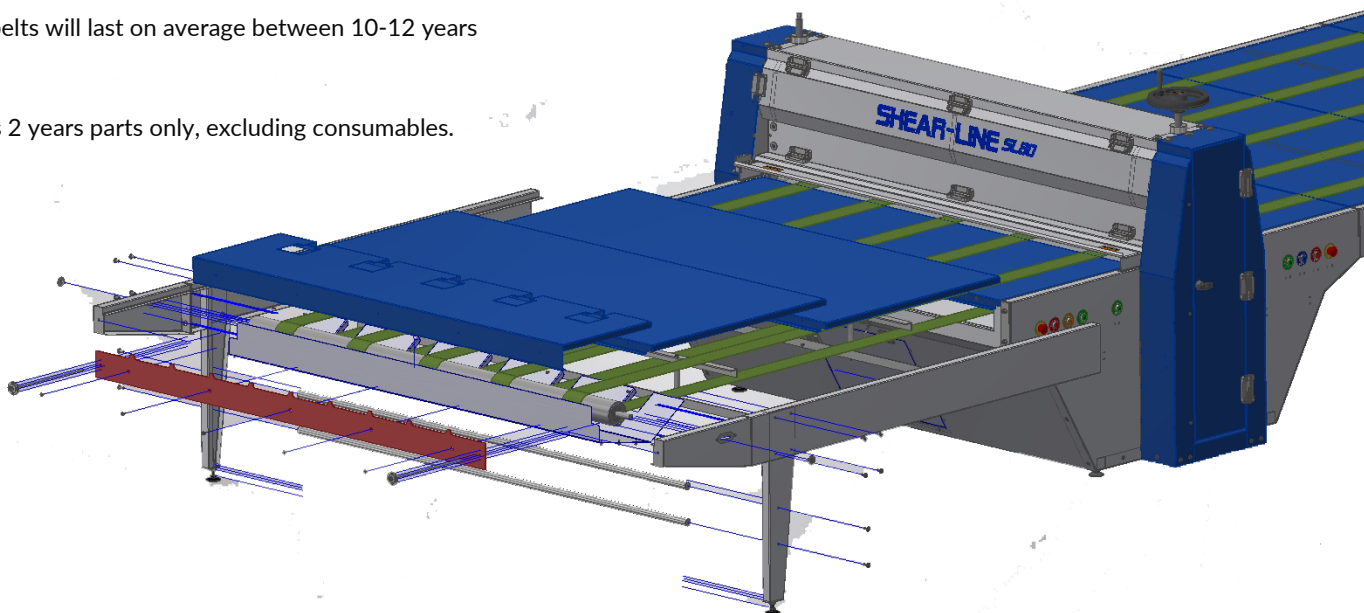
Polypropylene Sleeve replacement average between 6-12 months

Friction wheels life between 3-4 years

Conveyor belts will last on average between 10-12 years

Guaranty

Warranty is 2 years parts only, excluding consumables.



Upgrades

2022 Upgrades:

- ✓ Sleeve change down from 15 stages to 7 stages, quicker and simpler. Sleeve change in around 20 minutes.
- ✓ Upgraded touch screen and software with new job timer, batch count, safety and monitoring features.
- ✓ Two handed safety start feature. Disabled through the HMI if required - password protected.
- ✓ New press section height measuring system with LED readout for press section gap position.
- ✓ Voltage panel meter, an added safety feature.
- ✓ New magnetic switches and interlock door hinges.
- ✓ Better maintenance access.



Technical Data

Technical Data	
Length (Without Extension Tables)	127" (3000mm) without extension tables
Height	54" (1375mm)
Width	Machine model width + 630mm
Electrical Specifications	Single phase or 3 phase
Main Drive Motor dependant on model	1.5Kw, 2.2Kw, 3.7Kw and 5Kw
Power Consumption	Peak 10 amps / Cont; 8 amps
Press Roller Speed	50 rpm
Diameter of main press rolls	8" (200mm)

Models	Max cutting width	Inch	mm
SL 30	22" (558mm)	30"	760mm
SL 41	33" (838mm)	41"	1040mm
SL 54	46" (1168mm)	54"	1375mm
SL 70	62" (1574mm)	70"	1780mm
SL 80	72" (1828mm)	80"	2030mm
SL 100	92" (2336mm)	100"	2540mm
SL 120	112" (2844mm)	120"	3050mm

